

# PCB Solderable Finishes – Paste & Flux Compatibility

## Thursday 3<sup>rd</sup> May 2012 – Henkel, Hemel Hempstead

Workshop starts with coffee from 9:30 am. The event will conclude by 4.00pm

This workshop will look at the benefits and disadvantages of ENIG, OSP, Immersion Silver, tin and solder leveling as current options for printed circuit board solderable finishes. The session will also review the performance during PCB fabrication and assembly plus some of the common process problems experienced in industry. The Workshop will conclude with a practical session where delegates will be able to see firsthand the use of such finishes in manufacture. Each delegate at the event will receive a copy of the SMART Group Surface Finish Poster Guide

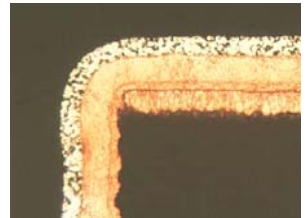
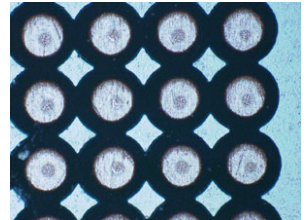
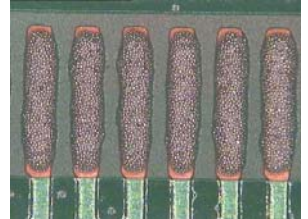
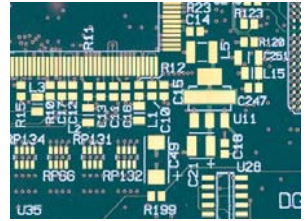
### Workshop includes:

- Overview of the surface finish selection criteria
- How finishes will influence its performance in assembly
- Correct selection of paste and flux for different surface finishes
- Latest developments in fluxing technology
- Common process problems relating to the PCB solder finishes
- Impact on long term storage of PCBs
- Practical hands on session, printing and reflow

*Question time - For analysis on the day email your failure photos to [technical@smartgroup.org](mailto:technical@smartgroup.org)*

### Who should attend?

The workshop is ideally suited to all persons involved in the Design, Specification, Manufacture and Quality Control of Printed Circuit Assemblies, including Design Engineers, Production Engineers and Quality Engineers. It will assist purchasing executives understand the different options when discussing issues with their supply chain and the compatibility with different flux and paste combinations



SMART Group Update  
on our EU Projects



## Directions by Car from The M1

Leave the motorway at junction 8, at first roundabout straight ahead (2nd exit), at next roundabout straight ahead (2nd exit) keep to right hand lane and turn right at the first available cut through in central reservation into Leverstock Green Road, at double mini roundabouts turn left into Vauxhall Road at roundabout turn right into ground.

## From The M25 & A41 Hemel Hempstead Bypass

Leave M25 at junction 20, Kings Langley follow the signs for Aylesbury A41. Leave the bypass at the Hemel Hempstead exit and follow to Town Centre. Eventually arriving at the famous funny roundabout. From there you follow the signs for the M1. At the top of the hill straight over the roundabout (or you can stay in the left lane and by pass it) at the next roundabout straight ahead (2nd exit) then take the 3rd turning on the left into Leverstock Green Road, at double mini roundabouts turn left into Vauxhall Road at roundabout turn right into ground.

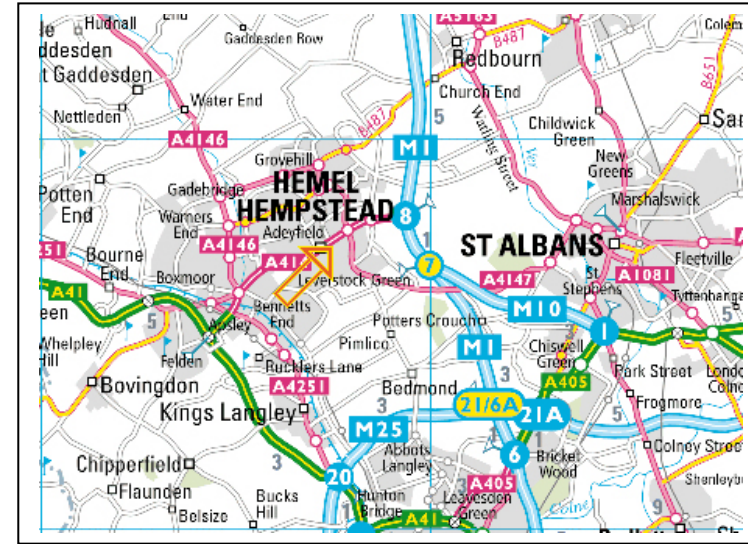
## Getting There By Bus

From Town Centre or from The Train Station ask for the No 5 or 4 to Adeyfield Shops and its just a 5 minute walk from there. Or also ask for No 6 bus to Saracens Head

Visit SMART Diary [www.smartgroup.org/diary](http://www.smartgroup.org/diary)



SMART Group Update  
on our EU Projects



Get your free Lead-Free  
Defect Guide from  
SMART Group

**To book your place fax your booking form to SMART Group registration 01494 473975**

Please reserve \_\_\_\_\_ places at the workshop on Thursday 3<sup>rd</sup> May 2012  
£85 SMART Group members/£175 Non members + VAT)

Name: \_\_\_\_\_ Name/s: \_\_\_\_\_

Company: \_\_\_\_\_ Address: \_\_\_\_\_

Telephone: \_\_\_\_\_ Fax: \_\_\_\_\_

Email: \_\_\_\_\_ @ \_\_\_\_\_

Emails: \_\_\_\_\_ @ \_\_\_\_\_

Card type: Visa/Mastercard/AMEX Card no: \_\_\_\_\_

Card expiry date: \_\_\_\_\_ Card security code on front (AMEX) or back \_\_\_\_\_

Signature: \_\_\_\_\_

SMART Group, 85 Easton Street, High Wycombe, Bucks HP11 1LT  
Telephone: +44 (0) 1494 465217 Facsimile: +44 (0) 1494 473975  
[info@smartgroup.org](mailto:info@smartgroup.org) [www.smartgroup.org](http://www.smartgroup.org)